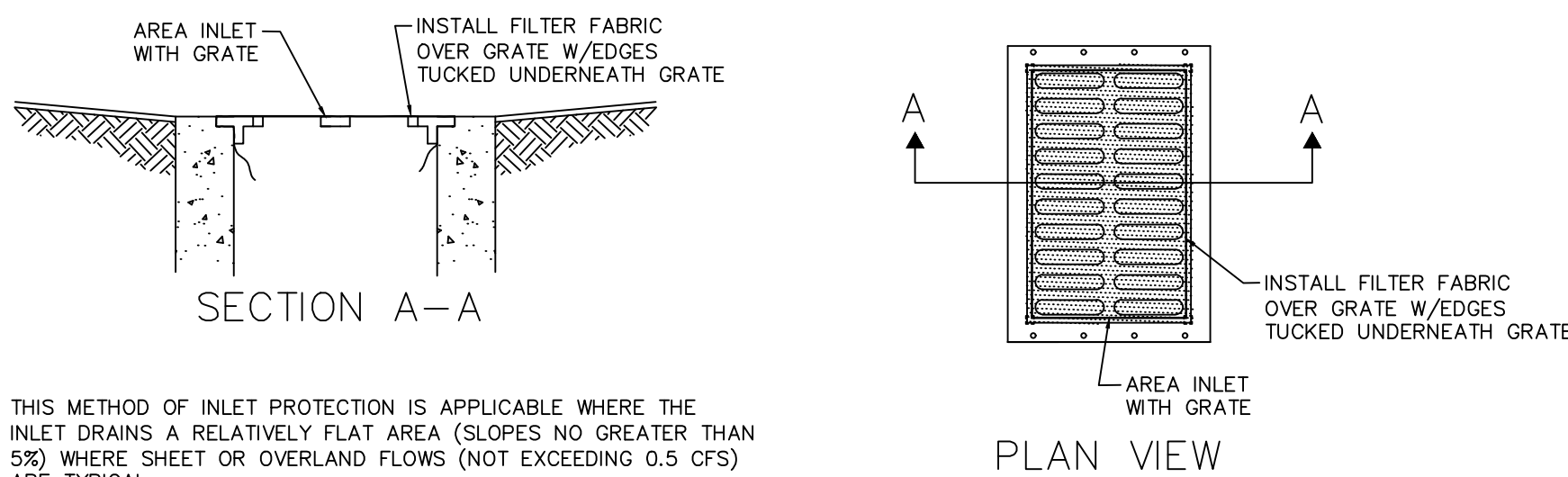
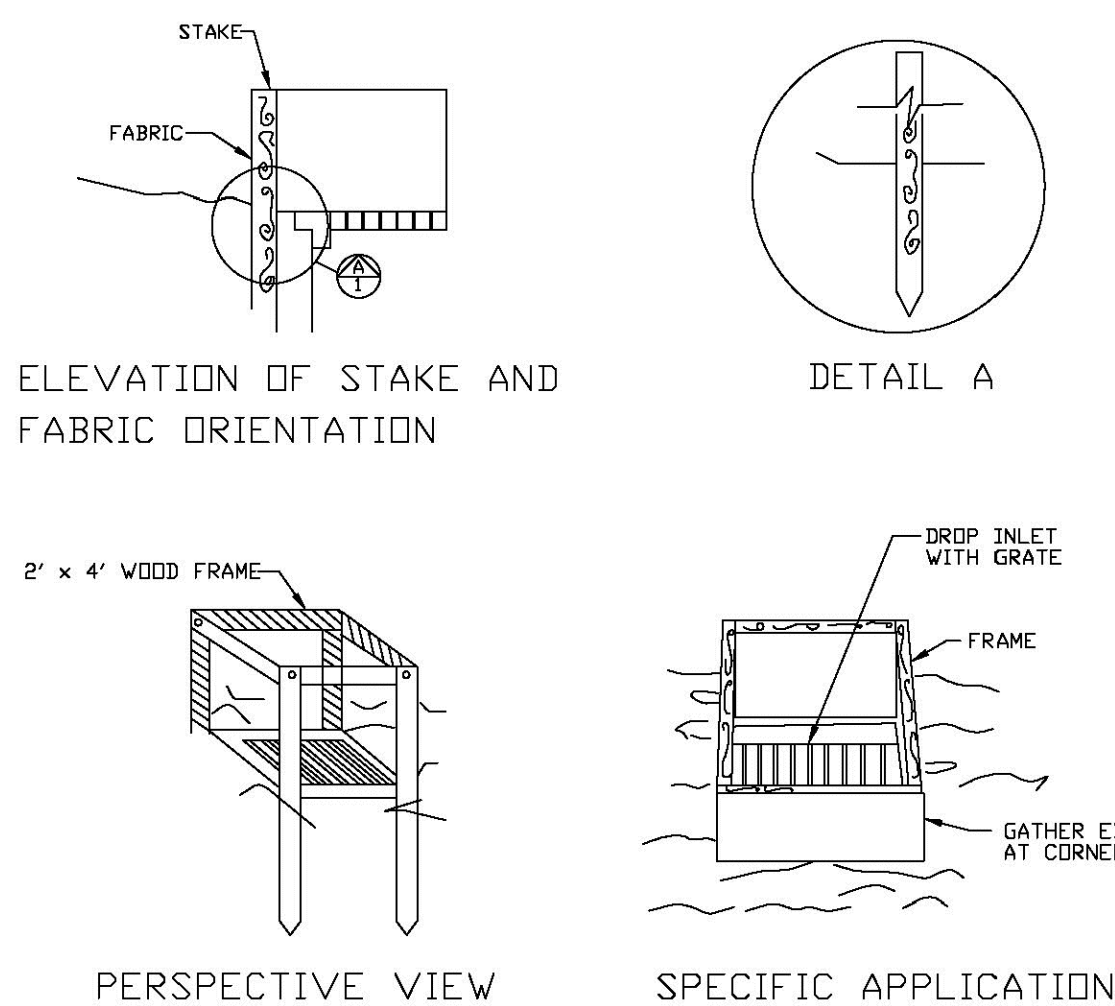


TEMPORARY GRAVEL CONSTRUCTION ENTRANCE
N.T.S

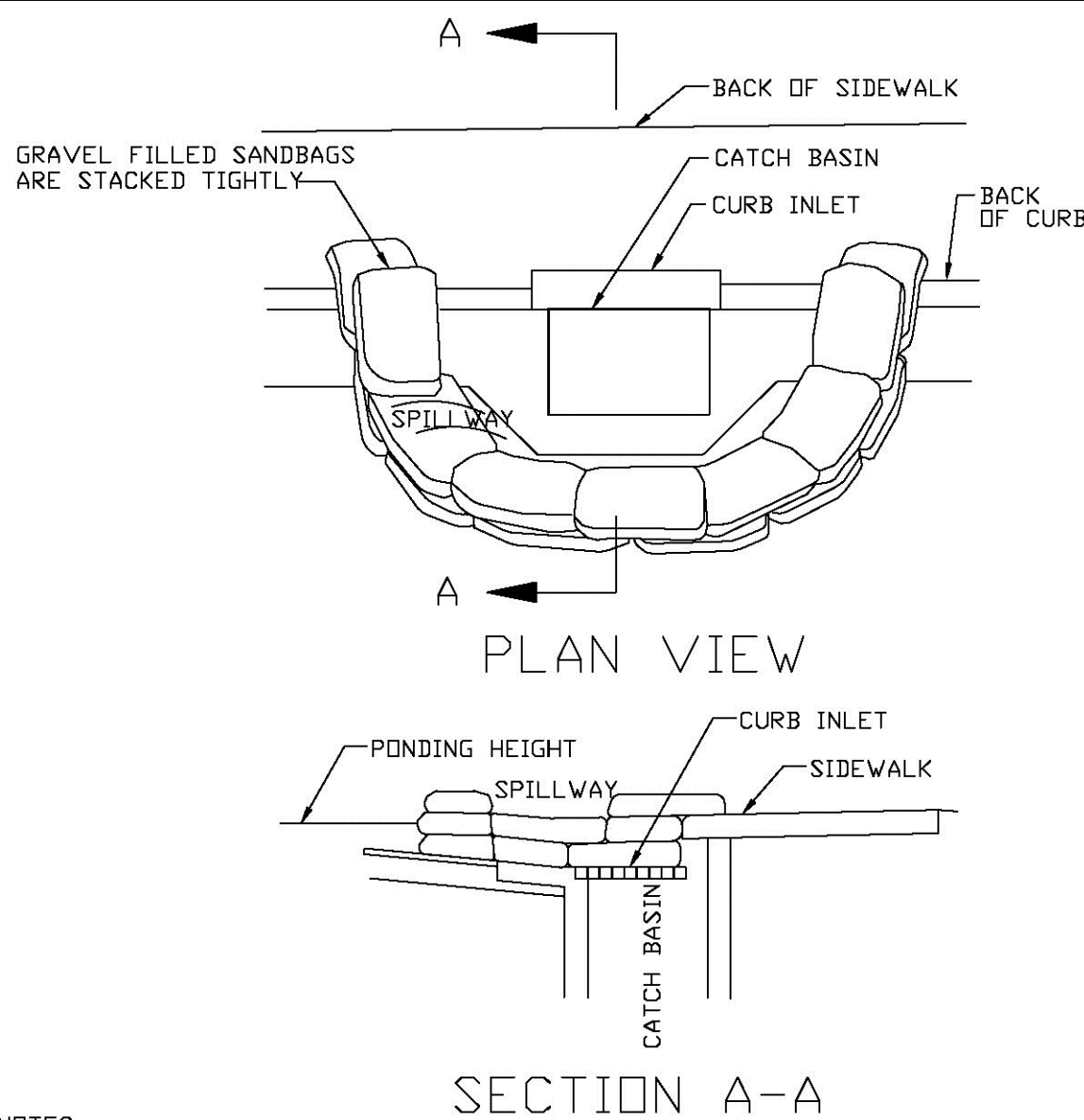


THIS METHOD OF INLET PROTECTION IS APPLICABLE WHERE THE INLET DRAINS A RELATIVELY FLAT AREA (SLOPES NO GREATER THAN 5%) WHERE SHEET OR OVERLAND FLOWS (NOT EXCEEDING 0.5 CFS) ARE TYPICAL.



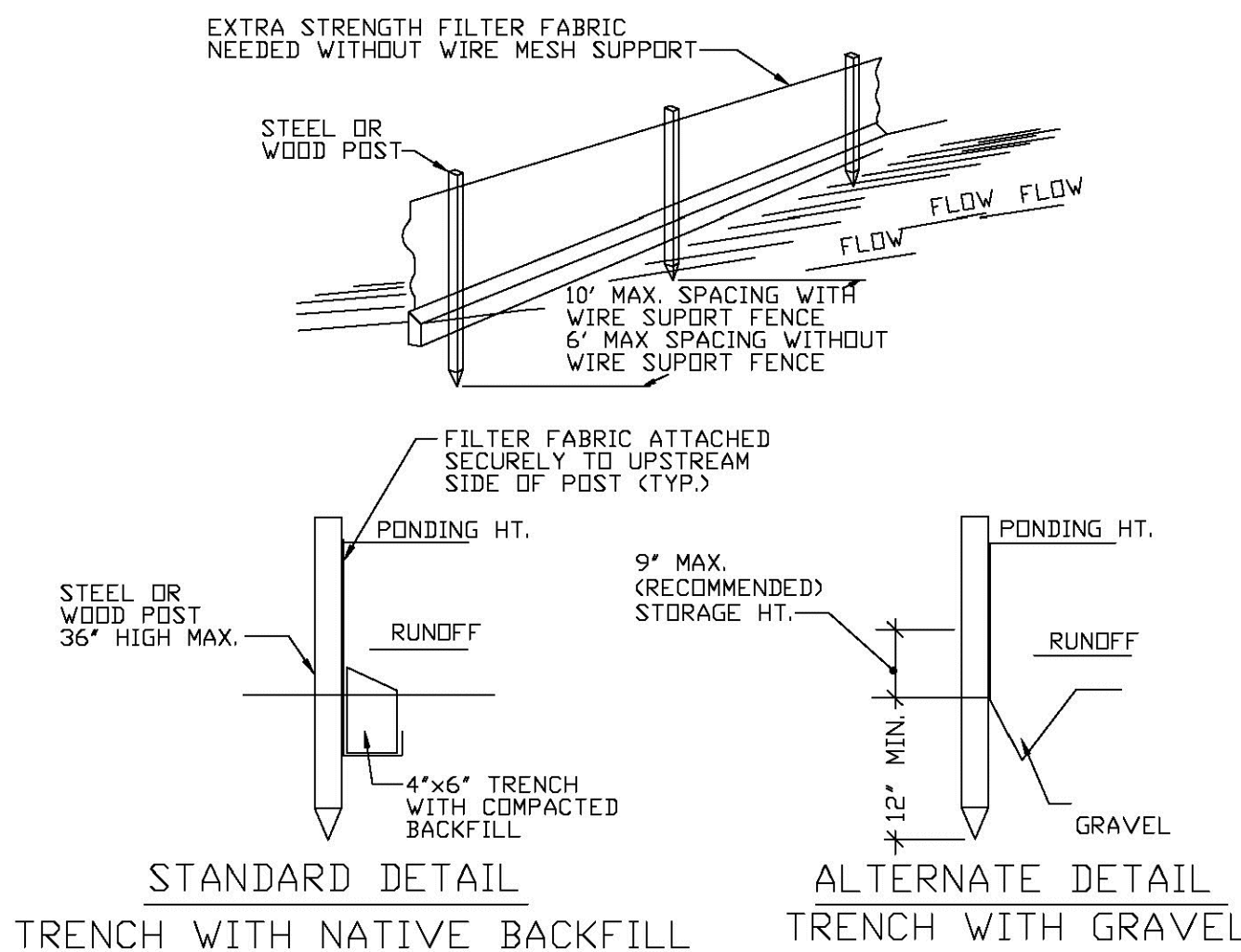
FILTER FABRIC
DROP INLET SEDIMENT FILTER

ENGINEERING STANDARDS 2025				
REVISIONS		ENGINEERING DIVISION CITY OF POMPAÑO BEACH	FILTER FABRIC DROP INLET SEDIMENT FILTER	
BY	DATE			
			DATE: MAY 2022 DWG. NO. 508-1	
SCALE: N.T.S.				



CURB INLET SEDIMENT BARRIER

ENGINEERING STANDARDS 2025			
REVISIONS		ENGINEERING DIVISION CITY OF POMPAÑO BEACH	CURB INLET SEDIMENT BARRIER
BY	DATE		
SCALE: N.T.S.		DATE: MAY 2022	507-1
		DWG. NO.	



SILT FENCE
EROSION CONTROL GENERAL NOTES

1. SILT FENCE AND TURBIDITY BARRIERS MUST REMAIN IN PLACE AND BE MAINTAINED AT ALL LOCATIONS SHOWN IN THE DRAWINGS UNTIL CONSTRUCTION IS COMPLETED AND SOILS ARE STABILIZED AND VEGETATION HAS BEEN.
2. CPMTRACTOR SHALL SUBMIT SCHEDULE FOR THE INSTALLATION, INSPECTION AND MAINTENANCE THE EROSION CONTROLS FEATURES AS SHOWN IN THE DRAWINGS OR AS DIRECTED BY THE DESIGN ENGINEER. THE SCHEDULE SHALL SPECIFICALLY STATE SPECIFICALLY INDICATE THE SEQUENCE OF CLEARING, EARTH WORK OPERATIONS, AND EROSION CONTROL FEATURES WILL BE INSTALLED, INSPECTED AND MAINTAINED. IT SHALL ALSO INCLUDE METHODS TO PREVENT POLLUTION OF STREAM, LAKES, TIDAL WATERS, CANALS, AND IMPOUNDMENTS. ESTABLISHED.

ENGINEERING STANDARDS 2025				
REVISIONS		ENGINEERING DIVISION CITY OF POMPANO BEACH	SILT FENCE	
BY	DATE			
			DATE: MAY 2022 DWG. NO. 509-1	
SCALE: N.T.S.				

A circular professional engineer seal for Patrick D. Kaimrajh. The outer ring contains the text "PATRICK D. KAIMRAJH" at the top and "PROFESSIONAL ENGINEER" at the bottom, separated by two stars. Inside this ring, the word "LICENSE" is at the top and "STATE OF FLORIDA" is at the bottom, also separated by two stars. In the center of the seal, the license number "No. 78535" is displayed.

THIS ITEM HAS BEEN DIGITALLY
SIGNED AND SEALED BY:

PATRICK D. KAIMRAJH, PE
NO. 78535

ON THE DUE ADJUSTMENT
TO THE SILENCE

PRINTED COPIES OF THIS
DOCUMENT ARE NOT CONSIDERED

SIGNED AND SEALED AND THE
SIGNATURE MUST BE VERIFIED ON
ANY ELECTRONIC COPIES.

DRC SUBMITTAL
PLANS UNDER DEVELOPMENT
NOT FOR CONSTRUCTION

VERIFIED ON
7/27/2009

04/02/2025